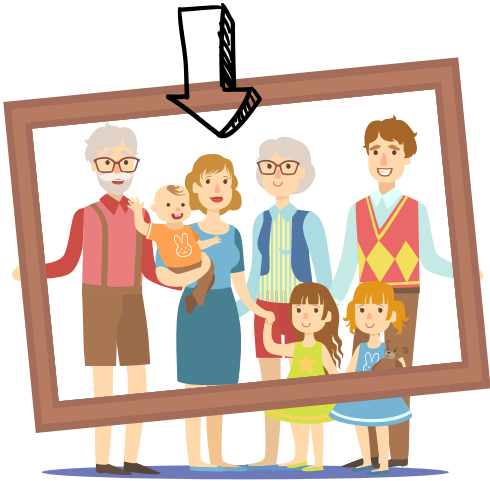


# Households

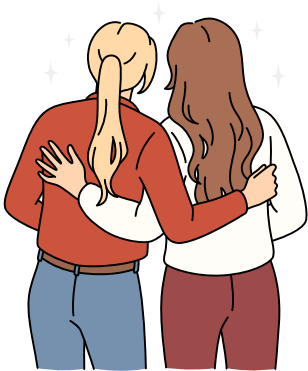


**Households are any grouping of 2 or more individuals who are being considered for housing together or who are being served together.**



**You MUST allocate one person to be the head of household regardless of who's in the household.**

All clients who are not part of a Household should be put as “Head of Household” on their assessment.



**Households can be made up of anyone as long as there is more than one person.**

This includes cousins, siblings, best friends, dating couples, married couples, families, blended families, any two humans wanting to live together.